

SHOW HOME WANAKA

61 LONGVIEW DRIVE, LONGVIEW,
HAWEA, WANAKA



TRIDENT HOMES[®]

Designed for living. Built for life.



AS BUILT PRICE

\$772,800*

210m²



4



2



2

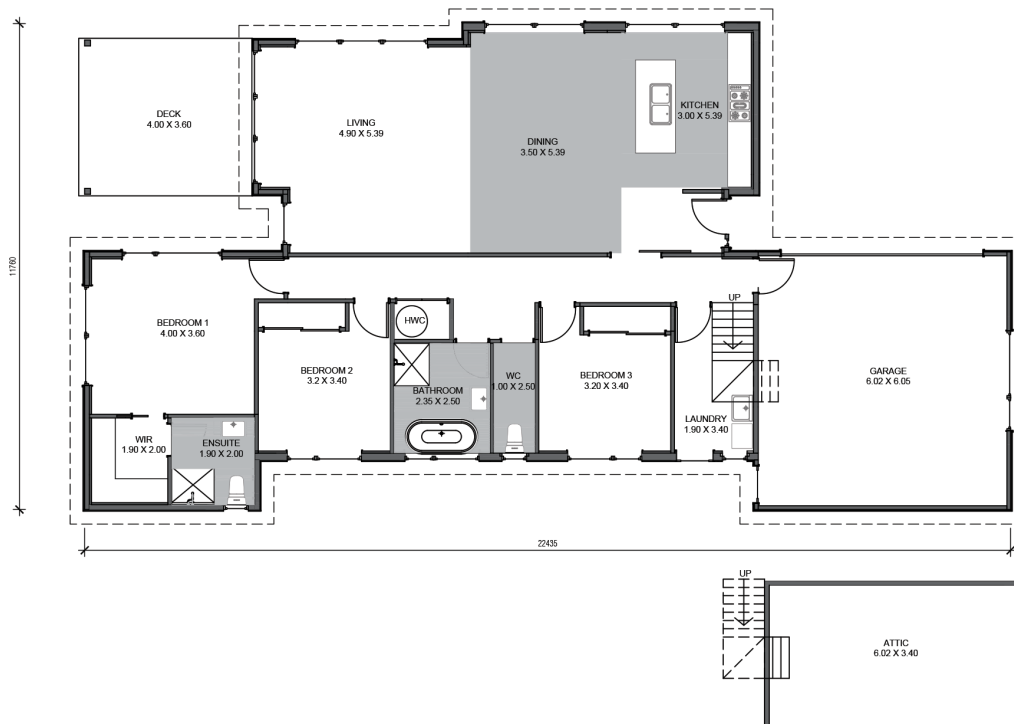


2



*Based on an NZS3604 Standard Foundation/Floor Slab

*Price excludes garage carpet, driveway, retaining, decking, all exterior fences, plantings, works & land.



Open Hours Wednesday - Sunday 12pm - 3pm or viewings available by appointment

For more information on this Show Home and its additions & upgrades

please contact Hayden Sutton 027 889 3952 or Mary-Louise Roulston 021 029 7005

www.tridenthomes.nz



SHOW HOME WANAKA

61 LONGVIEW DRIVE, LONGVIEW,
HAWEA, WANAKA



TRIDENT HOMES[®]

Designed for living. Built for life.



AS BUILT PRICE

\$772,800*

210m²



4



2



2



2



*Based on an NZS3604 Standard Foundation/Floor Slab

*Price excludes garage carpet, driveway, retaining, decking, all exterior fences, plantings, works & land.



Open Hours Wednesday - Sunday 12pm - 3pm or viewings available by appointment

For more information on this Show Home and its additions & upgrades

please contact Hayden Sutton 027 889 3952 or Mary-Louise Roulston 021 029 7005

www.tridenthomes.nz



STANDARD SPECIFICATION

(Refer to Main Building Specification for full details)

GENERAL

- Master Builders 10 Year Guarantee
- We manage the building processes from planning to completion
- Working drawings & all documentation required to obtain a consent
- Building Consent Fees (Regional differences may apply)
- All Construction and Liability Insurance
- Reticulated services up to 30 meters from slab
- House cleaned internally and externally

EXCAVATION

- Site scrape house platform area

FOUNDATIONS / FLOOR

- Allowed to maximum grade of 300 mm rise or fall (on good ground) 100 kpa

DRAINAGE

- Up to 40 metres of Stormwater connected to mains
- Up to 40 metres of Sewer connected to mains

CONSTRUCTION

- 2.4m high wall frame
- Rebated sills for all external sliding doors

FASCIA & GUTTER

- Metal fascia and gutter system

ROOF

- Longrun Iron (Corrugated or 5-Rib)
- Roof Pitch based on 25°

EXTERIOR WINDOWS, DOORS & GLAZING

- Aluminium
- Double Glazed, thermally broken

BRICK CLADDING

- Bricks to be from Builders selection

OTHER EXTERIOR CLADDING

- 150mm Linea weatherboard. (where applicable)

GARAGE DOOR/S

- Dominator Valero style sectional door, flat panel finish with electrical opener with two remote controls

ELECTRICAL

- Up to 30 meters underground mains cable installed
- 1 meter box
- Modular switchboard with 3 RCD units
- 3kw water heater circuit
- Cooking appliance circuit
- 32 LED downlights
- 2 two-way light switches
- 1 sensor light
- Garage door wiring including manual control wire
- Dishwasher outlet
- 2 exterior bulkhead lights
- Rangehood outlet
- Microwave outlet
- Fridge outlet
- 18 double plugs
- 6 single plugs
- 2 towel rail outlets
- 2 telecommunication outlets
- 2 TV outlets (aerial not included)
- 2 bathroom heater outlets (heaters not included)
- Exhaust fan/s (ducted to exterior) as required
- 1 doorbell
- Smoke alarms (as required to satisfy the Territorial Authority)

PLUMBING

- All plumbing work to comply with the requirements of the NZBC

STANDARD SPECIFICATION

(Refer to Main Building Specification for full details)

PLUMBING ITEMS

- Bath/s - LeVivi, Lucca `1600mm (white)
 - Heated towel rail/s - Heirloom Frome (1 per bathroom/s & ensuite/s)
 - Hot water cylinder - Rheem (mains pressure 250L)
 - Laundry tub & mixer/s - Aquatica, Laundra Tubbie 560 x 560mm with single level mixer
 - Mirror/s - 900 x 900mm polished edge
 - Outside tap/s - 2 x external garden taps (brass)
 - Shower/s - Clearlite, Sierra 900 x 900mm or 1m x 1m (to suit the design) square shower enclosure (white)
 - Toilet/s - LeVivi Marbella back to wall toilet suite with soft close seat
 - Toilet roll holder/s - Heirloom, Kubix (chrome)
 - Vanity/s - Cibolo Neo Wall-hung vanity 900mm, Acrylic basin
- Tapware:
1. Bath mixer/s - LeVivi Milan (shower mixer is used)
 2. Bath spout/s - LeVivi Milan (chrome)
 3. Basin mixer/s - LeVivi Milan (chrome)
 4. Kitchen sink mixer/s - LeVivi Milan (chrome)
 5. Shower mixer/s - LeVivi Milan (chrome)
 6. Shower slide rail/s - LeVivi Milan (chrome)

GAS WORKS

- Available on request

INSULATION

- Walls - Earthwool R2.6 (Regional R values apply)
- Ceilings - Earthwool R7 (Regional R values apply)

INTERNAL LININGS

- Bathroom/ensuite Aqualine Gib board (F4 finish)
- All other areas Gib board (F4 finish)

INTERIOR DOORS

- Flush panel MDF, hollow core, paint finish
- Wardrobe door/s - either aluminium sliders or flush panel

DOOR HANDLES

INTERNAL FINISHINGS

- Architraves to be nominal 60 x 12mm MUF (beveled profile)
- Skirtings to be nominal 60 x 12mm MUF (beveled profile)
- Bathroom/s, Ensuite/s & Laundry to be pine (bevelled profile)

JOINERY (For details please talk to your Sales Consultant)

- Kitchen/s Joinery
- Wardrobe/s Shelving
- Linen/Coat/Cylinder/Cupboard/s Shelving

TILING

- Bath/s (if applicable) Tiles from the Standard Trident Homes Range

PAINTING

- Watty Paint (finish based on 3 colours from a white base)

APPLIANCES

- Fisher & Paykel Oven - OB 60SC5EX1
- Fisher & Paykel Hob - CE604CBX2
- Fisher & Paykel Range Hood 900 Canopy - HC90PLX4
- Fisher & Paykel Dishwasher - DW60FC2X1

HEATING

- Available on request

FLOOR COVERINGS

- Underlay -10mm Foam
- Carpet -Belgotex from the Delta,Haven or Empire Collection
- Vinyl -Belgotex - Express vinyl planking

WINDOW COVERINGS

- Available upon request

EXTERIOR WORKS

- Available upon request

SHOW HOME PRICING

61 LONGVIEW DRIVE, LONGVIEW,
HAWEA, WANAKA



AS BUILT PRICE: \$772,800.00* inc gst / \$3,680.00 per square metre inc gst

As Built including additions & upgrades listed below.

**Based on an NZS3604 Standard Foundation/Floor Slab*

**Price excludes garage carpet, driveway, retaining, decking, all exterior fences, plantings, works & land.*

AS BUILT PRICE WITH SIPS: \$860,000.00* inc gst / \$4,095.00 per square metre inc gst

As Built including additions & upgrades listed below.

**Based on an NZS3604 Standard Foundation/Floor Slab*

**Price excludes garage carpet, driveway, retaining, decking, all exterior fences, plantings, works & land.*

ADDITIONS & UPGRADES INCLUDED IN THIS HOME/PRICE:

Cathedral ceiling in kitchen/dining
Ensuite shower- Tiled
Ensuite floor-Tiled
Undertile heating
Ducted heatpump
Mitsubishi Lossnay mechanical ventilation
SIP panel construction
Vertical timber cladding
Stria vertical cement board cladding
Internal stairs
Built in laundry units
Upgraded laminate flooring in the kitchen dining areas
Upgraded vanity in bathroom and shower
Barn door in kitchen
Velux windows
Solar tubes
Walk in wardrobe shelving and drawers

BASE PRICE: \$740,250.00* inc gst / \$3,525.00 per square metre inc gst

Built to Trident Homes Wanaka Specification Inclusions excluding additions & upgrades as listed above.

(Refer to Trident Homes Wanaka Specification Inclusions Document for more information)

**Price excludes land*

For more information about this show home and these options,
please contact the friendly team at:

Mt Iron Developments Ltd t/a Trident Homes Wanaka

PO Box 454, Wanaka

Phone 027 889 3952 | www.tridenthomes.nz