

House & Land Package

\$853,400



Belfast

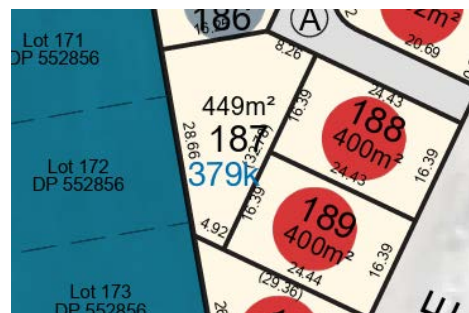
Lot 187 | Johnswood Ave

3 2 1 1

Section: 449m² Home: 150m²



This beautifully designed three-bedroom home currently in concept planning stage offers comfort, functionality, and effortless indoor-outdoor living. Featuring generous living areas, this home is perfect for both everyday living and entertaining. The modern kitchen boasts ample bench and storage space, making it as practical as it is stylish.



- Clad with Axon feature panels 133mm & 400mm profiles for contemporary look.
- Heat pump with wifi.
- Custom-designed kitchen with Fisher & Paykel Appliances.
- Quality Methven Tapware.
- Master bedroom with Tiled Ensuite.
- Separate WC.
- Quality floorcoverings.
- Driveway, patio, clotheline & letterbox.



TRIDENT HOMES®

Designed for living. Built for life.

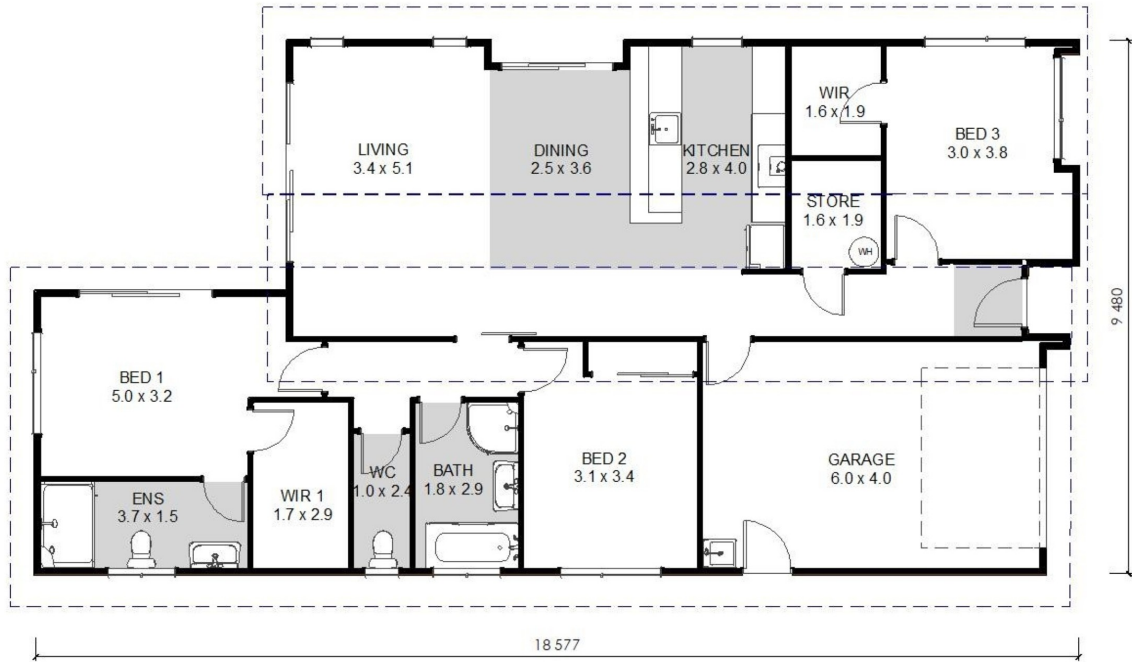
Belfast

Lot 187 | Johnswood Ave

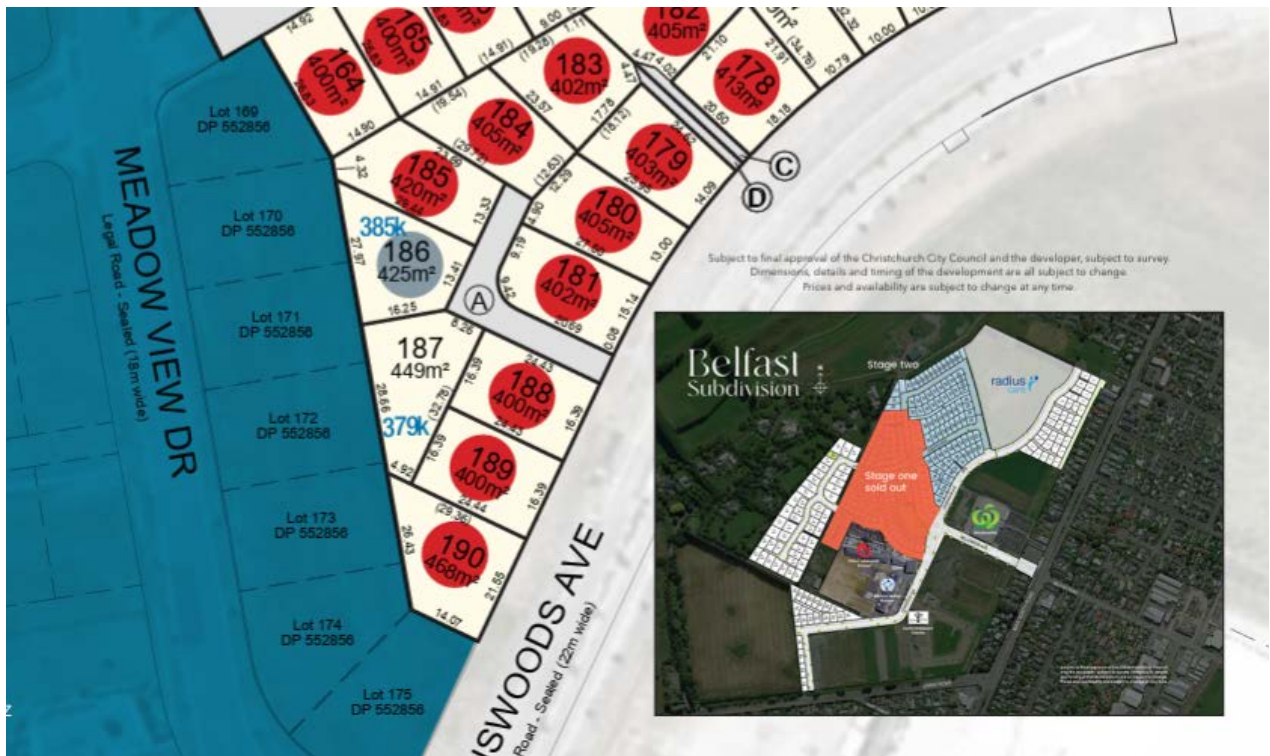
3 2 1 1

Section: 449m² Home: 150m²

Floorplan



Location



For more information on this Package and inclusions contact Trident Homes Christchurch.

pnisbet@tridenthomes.nz

03 375 9020

www.tridenthomes.nz

Pictures and plans on this brochure are artist's impressions only and may show items not included in the building contract. Please note that only items contained in the specification sheet in your building contract will be included. Please ensure you discuss this with your builder. All plans are subject to copyright to Trident Homes NZ.

