

House & Land Package

\$871,000



Hampton Grove

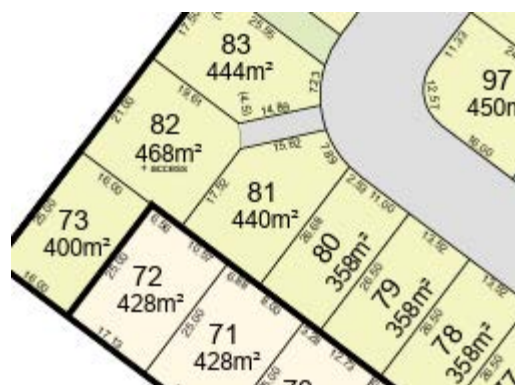
Lot 81 | Whiteoak Dr.

3 2 2 2

Section: 440m² Home: 180m²



This beautifully designed three-bedroom home currently in concept planning stage offers comfort, functionality, and effortless indoor-outdoor living. Featuring generous living areas, this home is perfect for both everyday living and entertaining. The modern kitchen boasts ample bench and storage space, making it as practical as it is stylish.



- Clad in maintenance free brick with Axon feature panels.
- Heat pump with WiFi.
- Custom-designed kitchen with Fisher & Paykel Appliances.
- Quality Methven Tapware.
- Master bedroom with Tiled Ensuite.
- Separate WC.
- Quality floorcoverings.
- Driveway, patio, clotheline & letterbox.



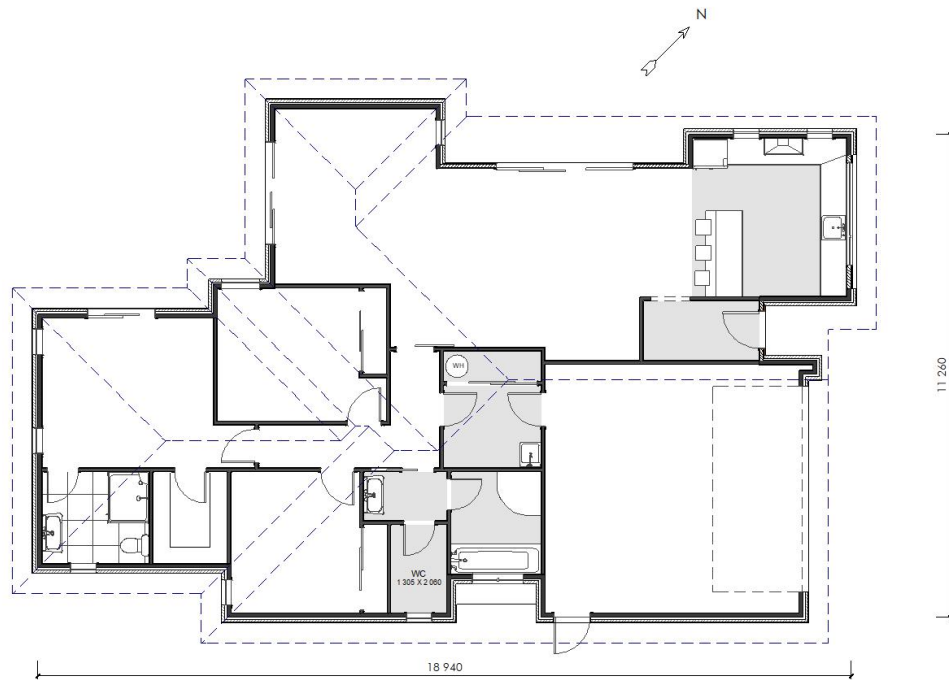
TRIDENT HOMES®

Designed for living. Built for life.

3 2 1 2

Section: 440m² Home: 180m²

Floorplan



Location



For more information on this Package and inclusions contact Trident Homes Christchurch.

04admin@tridenthomes.nz

027 224 3243

www.tridenthomes.nz

Pictures and plans on this brochure are artist's impressions only and may show items not included in the building contract. Please note that only items contained in the specification sheet in your building contract will be included. Please ensure you discuss this with your builder. All plans are subject to copyright to Trident Homes NZ.