

HOUSE & LAND Package

73 LENNON DRIVE,
ARBOR GREEN, ROLLESTON



TRIDENT HOMES®

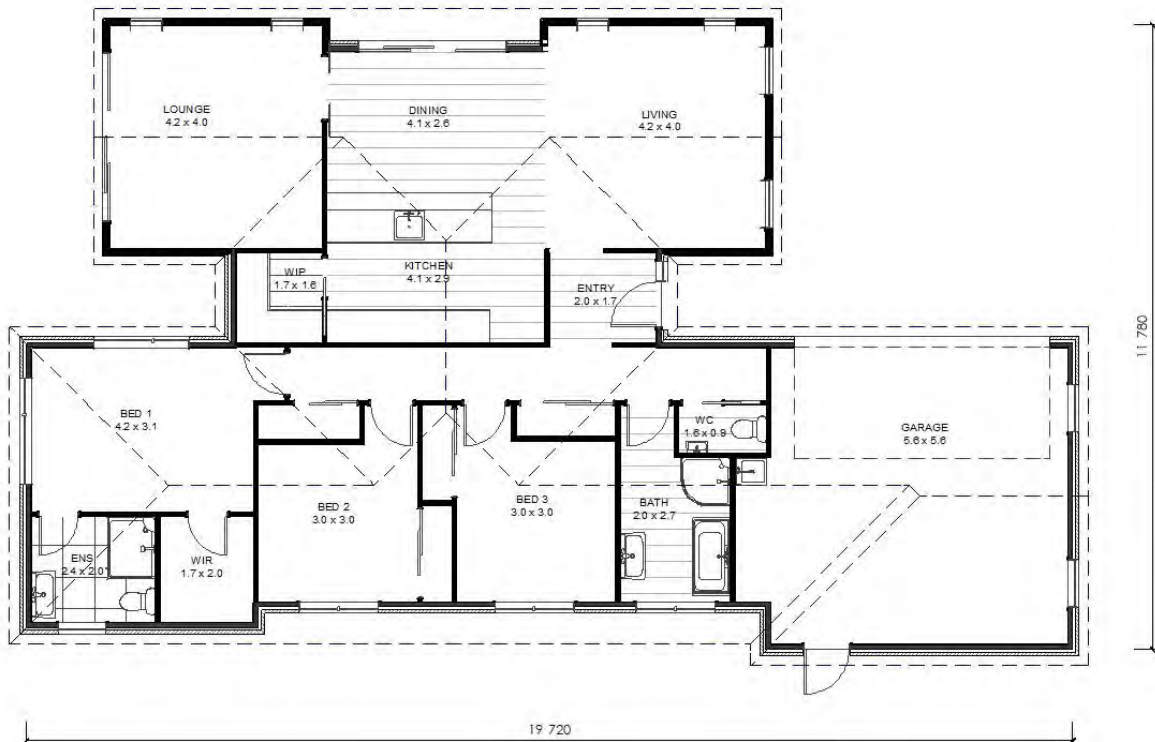
Designed for living. Built for life.



\$869,000

177m²  3  2  2  2  508m² 

This Package has been carefully chosen to suit both the site and location and has a customised specification.



**For more information on this Package and Inclusions,
Call Trident Homes Christchurch 03 349 0020
www.tridenthomes.nz**

Pictures and plans on this brochure are artist's impressions only and may show items not included in the building contract. Please note that only items contained in the specification sheet in your building contract will be included. Please ensure you discuss this with your builder. All plans are subject to copyright to Trident Homes NZ.

