

HOUSE & LAND Package

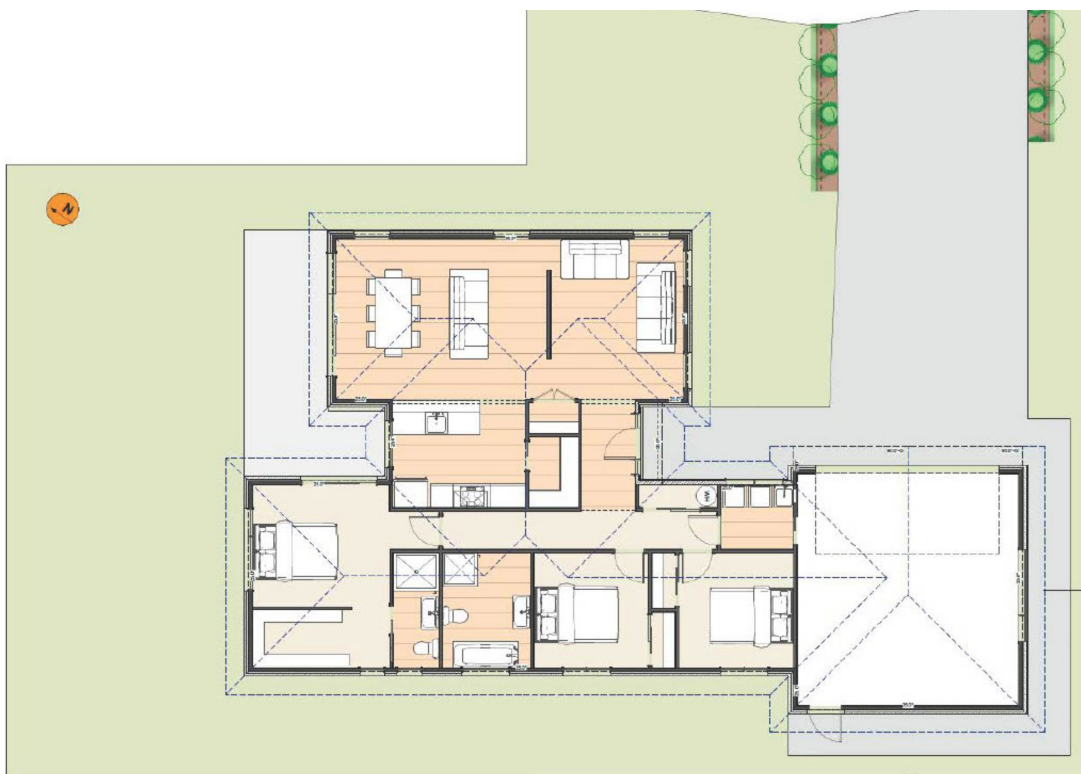
BROADFIELD GRANGE



\$765,400

171m² 3 2 1 2 545m²

This Package has been carefully chosen to suit both the site and location and has a customised specification.



For more information on this Package and Inclusions, Call Sunny Randhawa 027 215 4643
www.tridenthomes.nz

Pictures and plans on this brochure are artist's impressions only and may show items not included in the building contract. Please note that only items contained in the specification sheet in your building contract will be included. Please ensure you discuss this with your builder. All plans are subject to copyright to Trident Homes NZ.

