

COUNTRY RANGE

# Plan 08-05



**TRIDENTHOMES®**

*Designed for living. Built for life.*



237.3m<sup>2</sup>



3



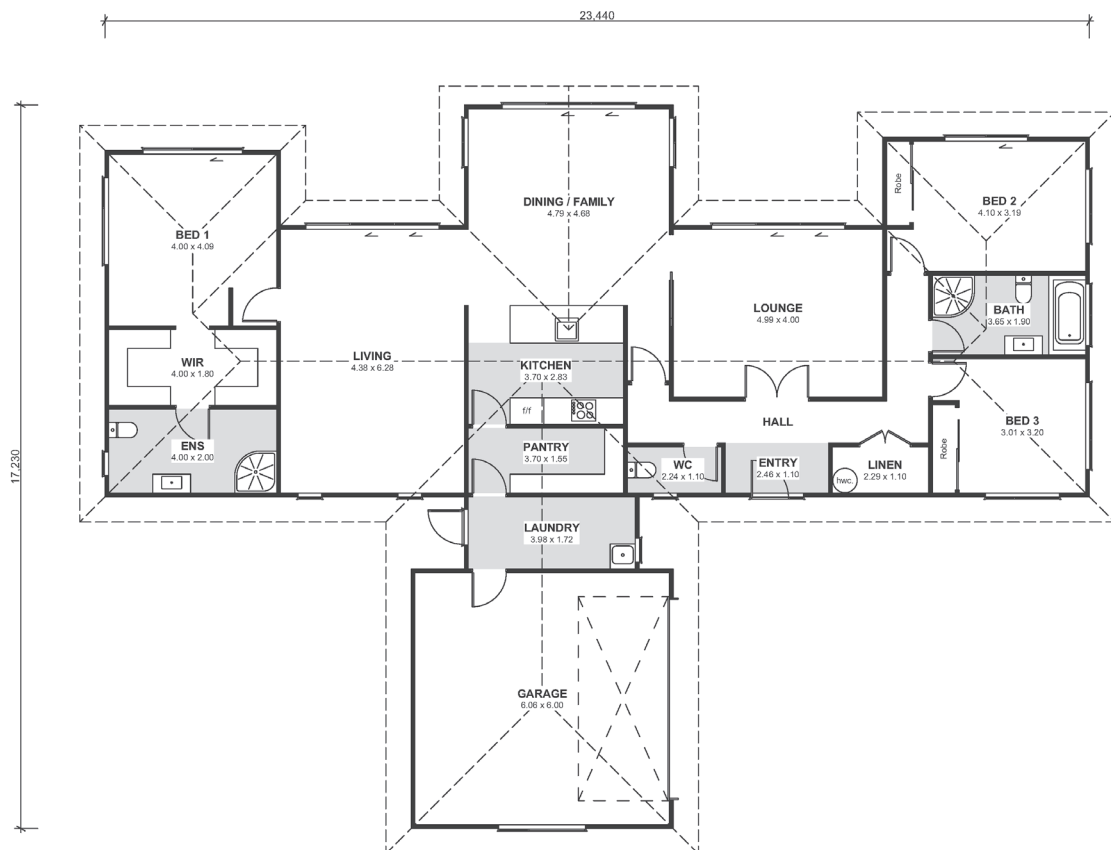
2



2



2



[www.tridenthomes.nz](http://www.tridenthomes.nz)

Pictures and plans on this brochure are artist's impressions only and may show items not included in the building contract. Please note that only items contained in the specification sheet in your building contract will be included. Please ensure you discuss this with your builder. All plans are subject to copyright to Trident Homes NZ.

**mb**<sup>TM</sup>  
MASTER BUILDERS